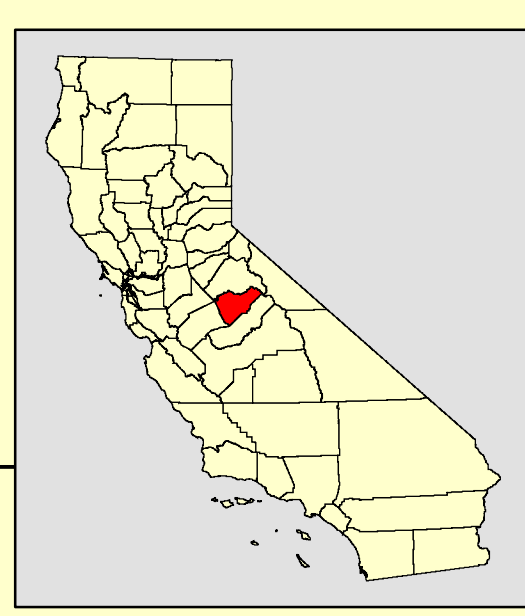
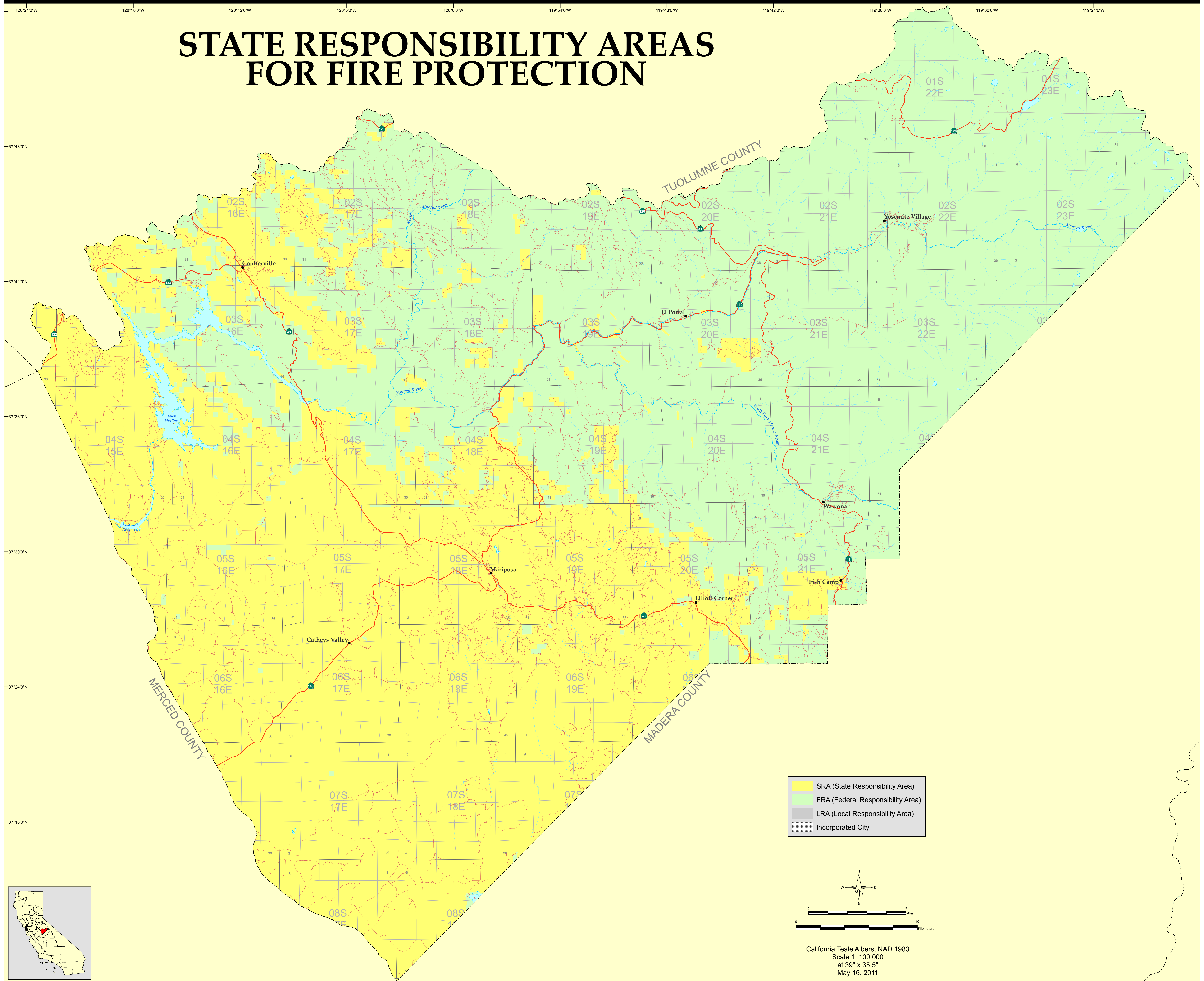


STATE RESPONSIBILITY AREAS FOR FIRE PROTECTION



The State of California and the Department of Forestry and Fire Protection make no representations or warranties regarding the accuracy of data or maps. Neither the State nor the Department shall be liable under any circumstances for any direct, special, incidental, or consequential damages with respect to any claim by any user or third party on account of, or arising from, the use of data or maps.

Obtain FRAP maps, data, metadata and publications on the Internet at <http://frap.cdf.ca.gov>
For more information, contact CDF-FRAP, PO Box 944246, Sacramento, CA 94244-2460, (916) 327-3939.

Jerry Brown, Governor, State of California
John Laird, Secretary for Resources, The Natural Resources Agency
Ken Pimlott, Acting Director, Department of Forestry and Fire Protection

DATA SOURCES
CAL FIRE State Responsibility Areas (SRA10_2)
CAL FIRE Incorporated Cities (Incorp10_3)

MAP ID: srmap22